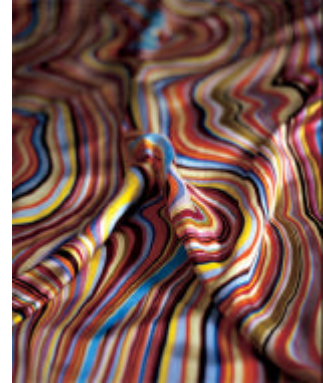


## Must see and do in Nottingham for the Core Cities Summit

So you're in Nottingham for a couple of days. There are many places and spaces around the city you just have to see.

### Home of Paul Smith

In 1970 Paul Smith opened his first store in Nottingham on Byard Lane. It was the start of one of Britain's most successful fashion empires. Sir Paul is passionate about Nottingham and has made the three storey Low Pavement base his flagship UK store. A few minutes walk from Old Market Square it's well worth a visit.



### Home of Old Market Square and the lions

One of the largest public squares in Europe, Old Market Square has had a mammoth £7 million face lift. The true heart of the city centre it has already proven a popular venue for music and cultural events. The Council House at one end of the Square has two guardians - the lions - a popular meeting place for both locals and tourists and a photo must for the scrapbook.

### Home to the Nottingham tram



Fast and efficient, Nottingham's state-of-the-art tram network has made getting around Nottinghamshire even easier. Travel from Nottingham to Hucknall or into the city from Phoenix Park park and ride. A great way to see the best of our splendid county. And you'll be travelling with local heroes - all the trams are named after famous sons and entrepreneurs - from Jesse Boot and Lord Byron to Brian Clough and Torvill and Dean.

### Home to Sky Mirror

Sky Mirror is an outstanding example of how art and regeneration work hand in hand. Designed by Turner Prize winner Anish Kapoor the sculpture brings a unique and elaborate feature to the cultural quarter of the city.

### Home to Nottingham lace

Nottingham is synonymous with lace and the former Lace Market district is one historic location not to be missed. Take the tram to the Lace Market stop and wander down High Pavement to experience Georgian residential splendour.



Buildings such as St Mary's, Shire Hall and the Lace Market Chapel give the area a unique and interesting character. The Adams Building is probably the most significant in the Lace Market. Designed by Hine and opened in 1855, it has clear Anglo-Italian influences.

